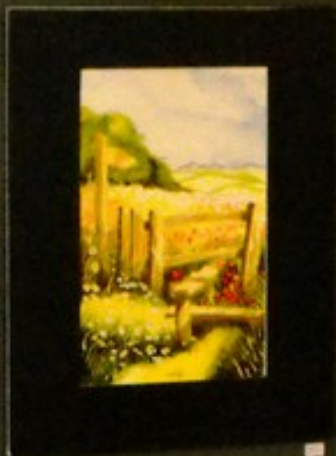
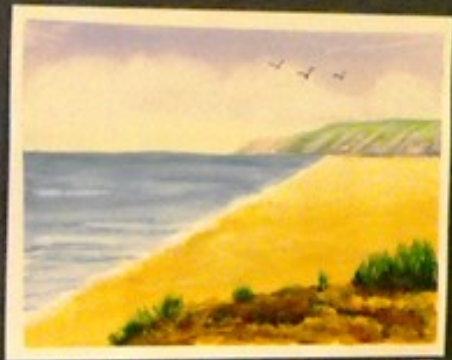


2012 EXHIBITION



Our 1st exhibition in 2012 included a very large piece of work that most of the artists contributed to. Pam took an well known painting and divided it up into 15 small squares and each artist was randomly given a square and a specific sized piece of paper and asked to copy the picture they had. Because the original is abstract none of us knew what the final picture should, or would look like and we couldn't even always identify what we were painting. We were allowed to use whatever medium we wanted as long as we tried to stick closely to the colours. At the opening of the exhibition Pam unveiled the final work after all the squares had been put together to reveal a fascinating result. You can see the result opposite.















Small white caption card with illegible text.



